

# Copema Supertoto

Contents	Page
Getting started, creating a reduced system	1
Main screen	2
Hedges	3
Conditions	3
Create system	4
Save system	6
Submit your system	7
Result	7
How the program creates a reduced system	8
Variable reduction improves winning chances	8
Advanced application of reduction and chances	9
Odds	10
Details of row	10
Print	11

**© Copyright 2008**  
**Copéma, Box 14005, 700 14 Örebro, Sweden**  
**[www.copema.se](http://www.copema.se)**

## Thank you for choosing Copema Supertoto

Supertoto is a combination of luck and skill. The more skilful you are, the less you need to rely on pure luck. We are convinced that using Copema Supertoto will enable you to exercise your own skill much better than with the usual single coupon system - your chances will be much greater. Thank you for choosing Copema and – good luck!

### Getting started, creating a reduced system

1. Click on **Coupons**. The program will retrieve the date of the current game from Unibet. You may have to alter your security application settings to allow Supertoto.exe to connect with the internet.  
Next click somewhere on the date to download the coupon and the statistics. The program will automatically adjust to the right number of matches, 10 or 14. If you do not want to download the coupon, you can alternate between 10 and 14 matches manually.
2. Hedge in any way you like. You have 100% cover for every match, which you can divide as you wish between home win, draw or away win.
3. Select **Create system** and enter the number of rows you wish to play.
4. Click on **Create** to create the system.
5. Once the system is ready, close the window and save the system using both Save system and Reduced system. **Save system** saves the whole system with hedges, etc. This is needed for making subsequent changes to the system.  
**Reduced system** only saves the rows. This is the file which is later transferred to Unibet, "Reduced system".

You can create excellent systems just from your hedges. But if you want, you can also set conditions for the rows. You can select any number of rows you like regardless of the hedges you have made.

## Main screen

Number of rows: **4782969**

Selection Allowed number Not a valid number

Number of rows and 14 correct chance

Last saved files  
XXX  
XXX  
XXX

### Worth knowing

- 1 = home win
- X = draw
- 2 = away wins

The easiest way to alter your hedges is to first mark 40 in match 1 and write your hedge. Then you move forward with Enter, write in your number, click on Enter, write your number, click on Enter ...

Statistics shows you selection distribution among the submitted rows. If you want to transfer the percentage to your hedges, click on the button with the right arrow.

Under conditions you mark and unmark selections by pointing with the cursor and left clicking. Do the same with the numbers. But they must be enabled first.

There is room for 100 conditions. Scroll through using the scrollbar.

The button marked 0 above the scrollbar clears all conditions.

Every visible condition also has a button marked 0. This will remove the condition.

To deactivate a condition temporarily left click on the green circle. Click again and the condition is reactivated.

The program also works with individual rows.

## Hedges

For each match you have a 100% 1-X-2 selection, which you can divide as you like between home win, draw or away win.

Example:

100	–	0	–	0	1
50	–	50	–	0	1X
45	–	25	–	30	1X2
0	–	30	–	70	X2

0-30-70 means that X will be placed in about 30% of the rows and 2 in about 70% of the rows in the reduced system.

In a “normal” single coupon system, there are always an equal number of 1-X-2s in a selection. 1X is equivalent to 50-50-0 and 1X2 to 34-33-33.

Exploit the advantages of being able to distribute your 1-X-2 selections yourself. This should considerably improve your chances of getting 14 correct.

## Conditions

Number of rows under hedges on the main screen refers to the number of rows contained within the hedges. We call this the frame.

It’s almost impossible to play all the rows within the frame. Using the conditions you can remove the rows you want.

Conditions is an extremely powerful tool, and only your imagination limits what you can do with it. Here are a few examples:

0	1	●
1 X 2		14
1 X 2		13
1 X 2		12
1 X 2		11
1 X 2		10
1 X 2		9
1 X 2		8
1 X 2		7
1 X 2		6
1 X 2		5
1 X 2		4
1 X 2		3
1 X 2		2
1 X 2		1
1 X 2		0

### Example 1

We think there will 6-8 right in the week’s favourite row. We want to exclude all rows with a lesser or greater number of rights from the system.

We mark the signs in the favourite row and leave 6-8 green-marked in the pile. The others have been marked red: prohibited.

When the program creates rows for the system each new row is compared with the sign in the condition. If the row does not have 6-8 of the marked signs, the row will be excluded.

0	2	
1 X 2		14
1 X 2		13
1 X 2		12
1 X 2		11
1 X 2		10
1 X 2		9
1 X 2		8
1 X 2		7
1 X 2		6
1 X 2		5
1 X 2		4
1 X 2		3
1 X 2		2
1 X 2		1
1 X 2		0

**Example 2**

We select three favourites but think that at least two of them are winners, any two.

The favourite wins are highlighted and the 0 and the 1 are highlighted in red.

The condition ensures that all rows in the system contain 2 or 3 of the highlighted signs.

0	3	
1 X 2		14
1 X 2		13
1 X 2		12
1 X 2		11
1 X 2		10
1 X 2		9
1 X 2		8
1 X 2		7
1 X 2		6
1 X 2		5
1 X 2		4
1 X 2		3
1 X 2		2
1 X 2		1
1 X 2		0

**Example 3**

We think that the right one will have exactly 3 of the highlighted signs.

No. 3 is highlighted in green, the rest in red.

**Worth knowing**

Each row in the system will comply with your conditions. Entering many conditions may frequently result in excessive demands being placed on the system. For example, a row cannot contain at least eight 1s, at least three Xs and at least five 2s. Each of the conditions is fine on its own, but all three cannot go together.

## Create system

When you have specified your hedges and any conditions you may have, you can create your system.

Click on **Create system**.

**Create system**

Name:

Date:

Number of rows:

Number of finished rows:

**Conditions**

Yes

No

**System**

New

Extend existing

**Construction method**

Number of different selections per row

1  2  3  4  5  6  7

Mathematical

Fill the Name and Date boxes as you wish.

If you are going to create a reduced system, state the number of rows.

Select whether the system should be created with or without conditions.

You can create an entirely new system or add to an already existing one, i.e. create a system made up of various part systems. For example, if you first create a system with 100 rows, you can then alter your hedges and conditions and expand the system to include as many rows as you like. Number of rows refers to the number of rows after expansion.

### Construction method

A mathematical system consists of the rows that are left in the frame after the conditions have been established. If the right row is contained within the frame and all conditions are true, the mathematical system will always produce a row with 14 correct.

If you decide to create a reduced system, you must also decide on the number of different selections per row. 1 means that all the rows in the system will be different. 2 means that if a row has 14 right, there can at the most be 12 right in the next best row. The greater the difference between the rows, the greater the chances that at least one row will be a winner. This is the advantage of making rows very different.

## Worth knowing

The maximum number of rows in a system is 32,000.

If too great a difference between rows is chosen, there will not be enough rows and system creation will stop or start to go very slowly. Moreover, 1-X-2 distribution will diverge more and more widely from the hedges selected. All selected hedges tend towards 50-50 or 34-33-33. After each system creation check 1-X-2 distribution in the system.

If you interrupt system creation you can retain the number of rows there and expand the system with a smaller row difference, or you can create an entire new system with a smaller row difference.

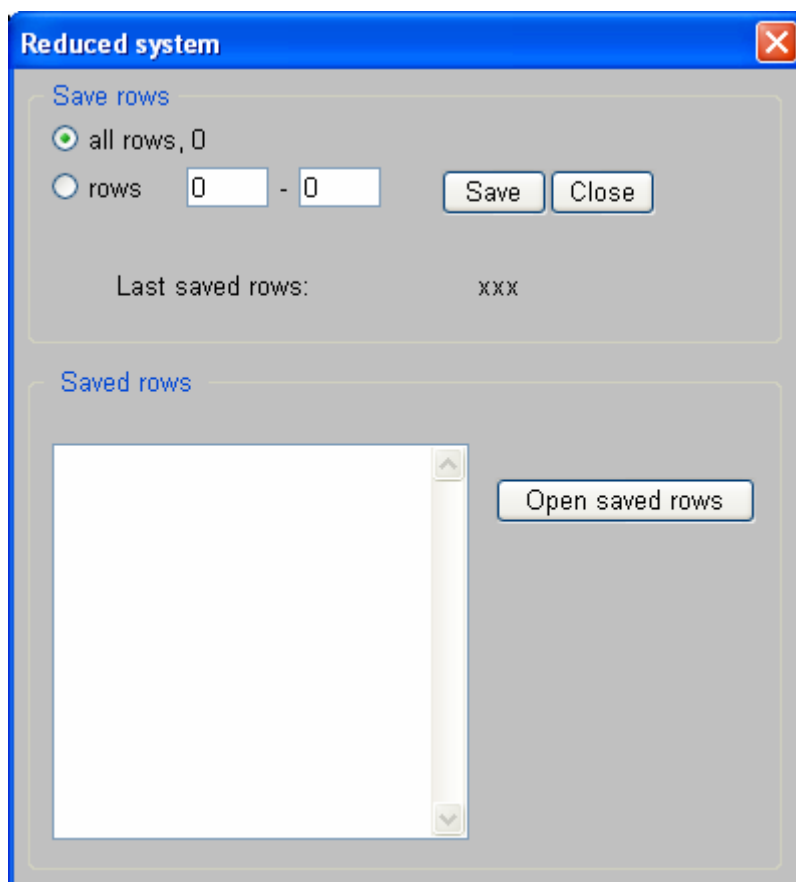
Unreduced system = mathematical system

## Save system

Once the system has been created you should save it both as **Save system** and **Reduced system**.

**Save system** saves the rows, the hedges, the conditions, etc. The file will be suffixed .stm, which is the file you will read in later using **Open system** when you wish to modify the system.

**Reduced system** only saves the rows. This file will be suffixed .txt. You then upload this file to Unibet.



You can save all rows in the system or just some of the rows.

You can also retrieve and examine rows which you have saved previously.

## Now submit your system

Browse to [www.Unibet.com](http://www.Unibet.com)

Login using your existing login details, if you do not have a login, click on “new customer”

Select Supertoto

Select “Upload own rows”.

Select the date for your coupon

Browse forward to the file with the rows, which must be submitted in \*.txt format.

Click on upload

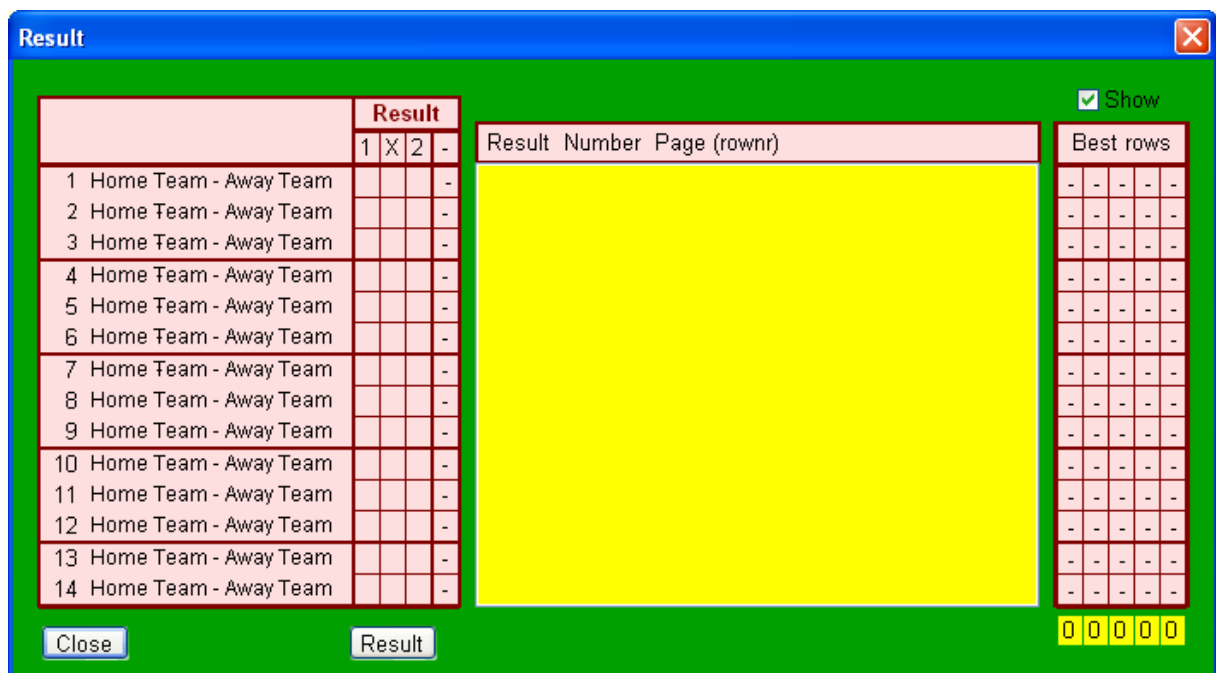
Review your system and click on “Place bet”

...

...

## Result

To modify the system retrieve it by clicking on **Open system** and selecting **Result**.



Mark the right rows by left clicking in the corresponding windows.

Once you have marked the row - either in its entirety or just selected results - click on **Result**. The program will compute the number in the row which are right.

Clicking in the “-“ box will remove an 1-X-2.

The 5 best rows are shown to the right. Select whether the rows should be displayed or not.

## How the program creates a reduced system

The program creates one row at a time by first randomly selecting 14 numbers between 0 and 1. Each number is then translated to an 1, X or 2 in accordance with your hedges.

Example: Hedge 45-25-30.

If the figure is less than 45 the sign will indicate a home win - a 1.

A figure above 0.45 but less than 0.7 will indicate a draw, an X.

A figure of 0.7 or more indicates an away win, a 2.

Each row is compared with any set conditions. If the row does not meet all conditions, it is discarded and the whole thing starts again with 14 new random numbers.

If the row conforms with all conditions, it is compared with all rows already in the system. If the difference between any of them is less than the number of different selections per row, the row will not be approved. The whole row is discarded and the system starts again with 14 new random numbers.

If the row is approved, a new row is added to the system. System creation continues until there are the number of rows you have ordered or until you stop creating.

## Variable reduction improves winning chances

Not all rows have an equal chance of being included in the system.

Example: Let's examine two matches which have both been hedged 60 – 40 – 0.

When the program creates the rows the odds in favour of the different combinations will be:

1-1	$0.6 * 0.6 = 36\%$
1-X	$0.6 * 0.4 = 24\%$
X-1	$0.4 * 0.6 = 24\%$
X-X	$0.4 * 0.4 = 16\%$

If we examine all matches, the odds for the various rows will vary greatly. The result is a system with **variable reduction**. **The least** reduction is where the odds of winning are greatest, i.e. rows with a high percentage.

Compared with ordinary hedges 50-50 and 34-33-33 you should have considerably better chances when you choose the percentage yourself. You definitely will not be more successful in every individual match, but on the whole you will. As a result, the number of rows diminishes more than the chances of winning. Play 1% of the rows and keep 10% of the 14 chance, or whatever the figure may be.

## Advanced application of reduction and chances

The screenshot shows the Copema Supertoto 2.0 software interface. A window titled "Statistic for non reduced system [%]" is open, displaying a table with 14 rows and 3 columns (1, X, 2). The "Hedges [%]" table is also visible, showing a similar structure. To the right, a "Conditions: 2" window shows a grid of 14 rows and 5 columns, with colored cells indicating selection status. The bottom panel shows the results of a calculation: "Number of rows and 14 correct chance" is 24012, and "The conditions increase the chance with" is 48%. The "Last saved files" section shows three "XXX" entries.

**Calculate** number of rows and 14 correct chance computes the effect of the conditions.

We can see how many rows are left after the conditions, i.e. the number of rows in the non-reduced system.

We can also see how much the conditions increase the 14 chance, provided that all conditions are valid. When calculating, the program allows for the various rows having different chances of being included in the system. For example, rows with globally low percents have little chance of being included in the system. Removing such lines does not particularly increase the 14 chance.

When reduction varies, the odds of winning depend on the right row. Next, **Calculate** calculates the highest and lowest 14 chance. Fill in the system's row number before calculation to include the odds in the system.

**Distribution** calculates 1-X-2 distribution in the mathematical system. The percent can be transferred to hedges with the arrow button. A reduction by this percent will result in a flat reduction and not a variable one.

Always check 1-X-2 distribution in the finished system. Normally it is necessary to adjust hedges to obtain the results intended. The amount the result can be modified from the mathematical base point depends on the degree of reduction. The difference between distributions in the mathematical and finished system can be seen as a measure of the variation in the reduction.

## Odds

Number of rows:

Calculate with conditions  Yes  No

	Probability or expected outcome	Payout [Euro]	Value [cent/row]
14	0	0	0
13	0	0	0
12	0	0	0
11	0	0	0
Sum:			0

Close

Calculate

It is not possible to state exact odds for a variable reduction. Here you can test the odds for various rows. Point and click to select a row.

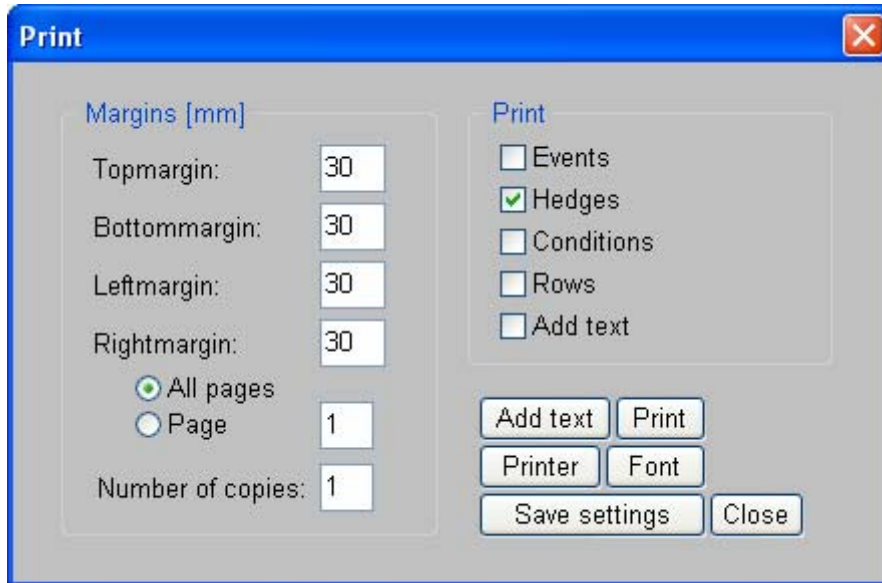
A reduced system can never guarantee 14 right. Whether you get 14 or not depends on what the odds were and how lucky you were. Once the game has been decided you can get the system to calculate the odds. Then you can determine whether you were lucky or unlucky with your reduction.

If you also state distribution, the value of the bet is calculated depending on whether you were lucky or unlucky with your reduction. In fact, you need have no rows at all to calculate the value. The distribution, the hedges and possibly the conditions are all that are needed. In a good bet the payoff is greater than the submission cost, more than 10% per row.

### Details of rows

Shows the rows. Each page contains 12 rows and you can scroll through one or more pages at a time.

## Print



Here you can print out your system on paper. Select the margins to be printed out and the required font. Should you wish, you can add your own text. The program checks paper size and lays out the transcript accordingly.

The latest settings saved are retrieved automatically every time the program is started.

If several of you are playing together, the easiest method is to email the file with the system to participants. Participants who do not have the full version of the program can download the demo version and use it to make adjustments.

## Liability

The program has been tested and has been shown to function as intended. Nevertheless, all gaming is at your own responsibility. Copema is not liable for any extra winnings or for missing winnings. If you would like to see any changes or additions to the program, do not hesitate to get in touch with us at [www.copema.se/supertoto](http://www.copema.se/supertoto). Good luck!